



COMMITMENT
WITHOUT
COMPROMISE

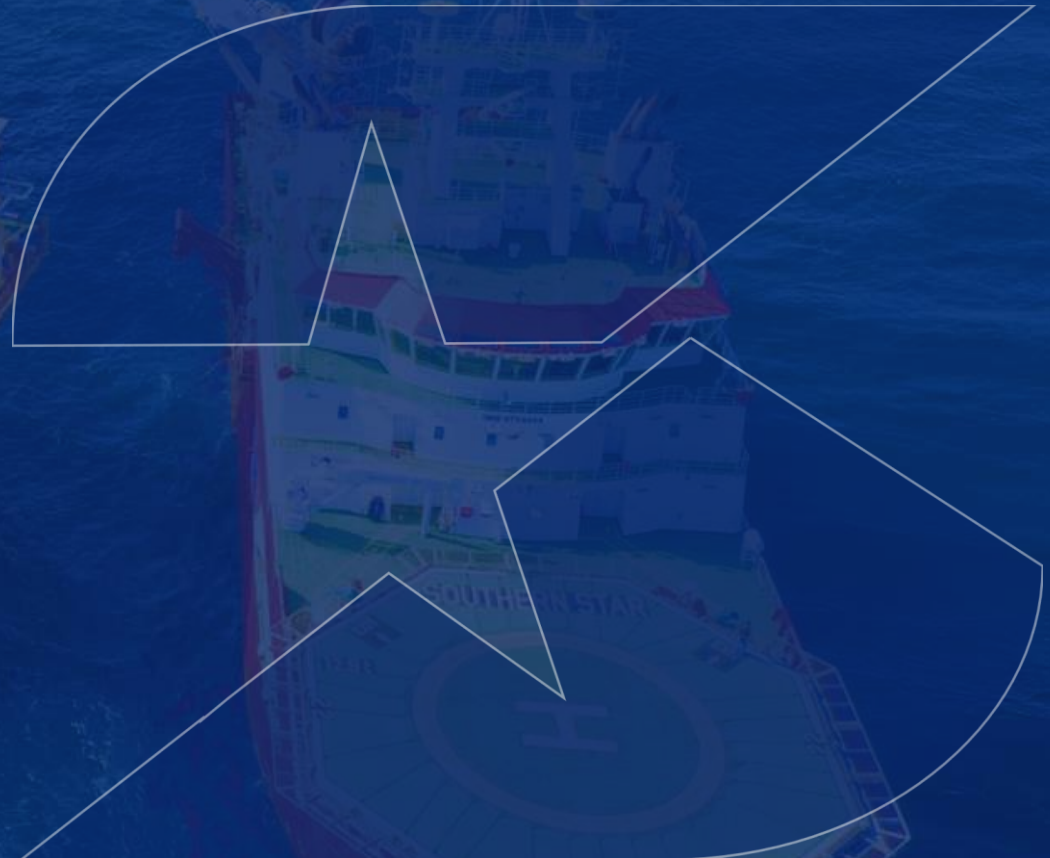


SOUTHERN STAR

ASSET CATEGORY



0 Offshore Diving Support
Construction Vessel DP III DSV





General Description

The Southern Star is an advanced Dive Support Vessel and builds on 10 yrs experience of bespoke vessel construction for the Asia Pacific Region. Unique features include Voith Schneider propulsion systems for superior maneuverability, station keeping and fuel economy. She is the first vessel in the region to have twin SPHLs and DP III capability. With a broad 1000m back deck she is perfect for light subsea construction work and has excellent stability in tough environmental conditions.

Shelf Subsea Group of companies are active members of various associations including IMCA. All details are presented herein in good faith and are believed to be correct at time of publication. System specifications are subject to change without notice.

Shelf Subsea Group of companies are active members of various associations including IMCA. All details are presented herein in good faith and are believed to be correct at time of publication. System specifications are subject to change without notice.

Detailed Specification

Class Notation	ABS✕A1 (E) Offshore Support Vessel, (DSV SAT, ROV, SPS✕ ACC ENVIRO, GP✕DPS-3 BWT UWILD. SPS compliant.
Build Date	2017
Registered Port / Flag	Marshal Islands
Dynamic Positioning	DP Class IMO DP Equipment Class 3 (DPS-3) Dynamic Positioning: Kongsberg K-Pos DP-22+ DP-12 BU
DP References	2 x DGPS, 2 x HIPAPs , 2 x Light weight taut wire,
Sensors	3 x Gyro Compasses, 3 x MRU, 3x Wind sensor
Dimensions	LOA 112m , Beam 24m, Draft 6.5m
Tonnage	Deadweight 4500t
Service Speed	12 knts
Main Propulsion	2 x 2,500 kW Voith Schneider
Bow Thruster	1 x Bow retractable azimuth (1,999 kW) 2 x CPP Tunnel thrusters
Main Diesel Generators	4 x 2500kw and 1 x 1m199 kw
Emergency Generators	2
Fuel Capacity	2000m3
Water Capacity	900m3
Ballast Water	4000m3
Helideck	Suitable for Sikorsky S92/S61N
Clear Deck	1000m2 clear deck @ 10 t/ m2
Main Offshore Crane	Macgregor Electrohydraulic knuckle boom type with active heave compensation (API2c) 150 T @ 11.5 m, Hook travel dist. 3000 m. Whipline 25 T @ 35 m, 5t man riding function.
Auxiliary Deck Crane	2 x 10t @10m
Accommodation	120 pax. 42 x twin cabins. 25 x Single Cabins. 11 x suites.
Other Facilities	4 x Offices. 2x Conference room. 1 x Prayer room, 1 x Gymnasium, 1 smoking room, 2 x Recreation rooms, 2 x Laundry rooms
Hospital	2 x beds , 1 x treatment room



Saturation Diving System

Class / Design	ABS Class / IMCA Compliant
Capacity	15 man
Depth Rating	300m
Bell	1 x 3 man, insulated and positively buoyant
Bell LARS	PH Hydraulic
Bell Moonpool	3.6m x 3.6m centre vessel with cursor system and aerated.
Chambers	3 x 6 man DDCs interconnecting via 3 x TUP and Wet Pot.
Gas Storage	19,712 m ³ , (2.2m ³ per tube , 200 bar, 44 Tubes)
Portable Gas Quad Storage	10 x 16 Cylinder gas quads
Diver Gas Reclaim System	Divex Electric Gasimer Type
Chamber Gas Reclaim System	Divex Gaspure Type
Nitrogen Removing System	Divex Helipure Type
SPHL	2 x 15 man SPHL located Port and Starboard sides of vessel.

Air Diving Systems

Class / Design	IMCA Compliant
Stations	2 x Air Dive Stations +DDC
LARS	Dedicated twin LARs for each station
Dive Control	Dedicated Dive Control overlooking deck operations

ROVs

Type 1	1 x SMD Quasar 150 HP 2000m rated Work Class ROV. See dedicated specification sheet for details.
Type 2	1 x Panther XT, 1000m rated Light work class ROV. See dedicated specification sheet for details
Housing	Dedicated Port and Starboard Hangers

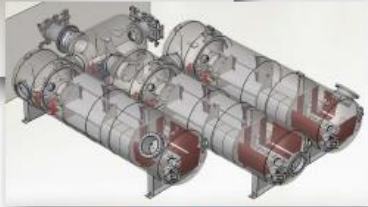
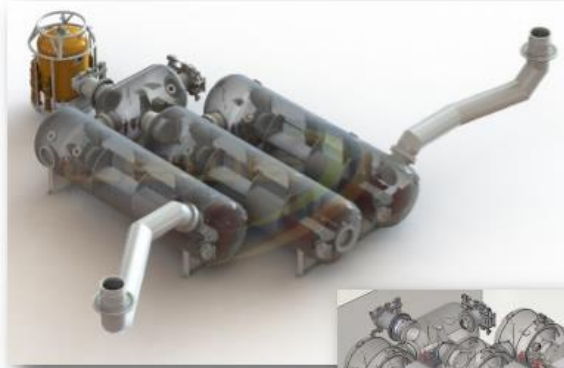
Survey

Fully integrate survey and positioning Suite

Services

The Southern Star is set up as a full service, ready to go light subsea Construction vessel. All key elements to support Subsea projects are fully operational and integrated as part of a working vessel including Saturation Diving Systems, Air Diving Systems, ROVs and integrated Survey Desk.

All are manned, managed and maintained by the Shelf Subsea Group to ensure smooth and fully integrated and interfaced operations.



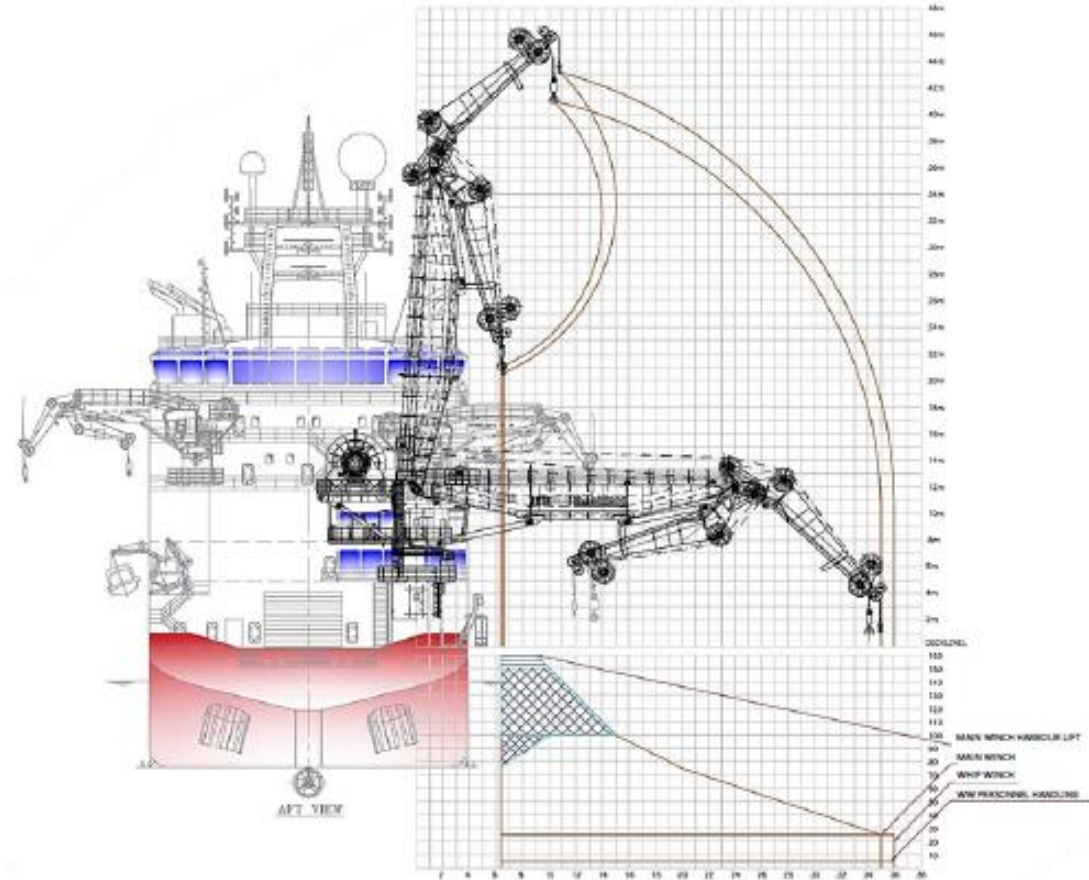
Detailed Chamber Layouts



Bell Handling System



Medical Monitoring and Wi-Fi Communications for Divers in DDCs



- 150T SWL AP2C1 Subsea Crane**
- 3,000 Metre working depth
 - Active Heave Compensation
 - 25T SWL Whipline

- Voith Schneider Propulsion x 2**
- Active Roll Compensation Mode

- Air Diving System**
- 50 Metre, 2 x Stage
 - 2 x Air DDC

- Working Moonpool**
- 7.2m x 7.0m
 - Load Bearing Top Door

- 1,000 m³ Working Deck**
- 50 Metre, 2 x Stage
 - 2 x Air DDC



- 120 Man Lifeboats each side**
- Australian Standard
 - SOLAS Standard

- 2 x Tunnel Thrusters**
1 x Retractable Azimuth Thrusters

- ROV Capability**
- ROV Hangar
 - ROV Control Room
 - ROV Workshop / Store

- Saturation Diving System**
- 300 Metre, Single Bell
 - 15 Man (3 x 6 Man DDCs)
 - SPHL (Port & Starboard)

- Helideck**
- D22.2 Metre
 - Sikorsky 591 / 561N
 - Deck integrated FiFi System

